

Violin 1

*Louise Farrenc*

*Première Ouverture  
a Grand Orchestre*

*Opus 23*

*Susan Pickett, editor*

**HILDEGARD PUBLISHING COMPANY®**

**Box 332, Bryn Mawr, PA 19010**

## LOUISE FARRENC

Parisian-born Jeanne-Louise Dumont (1804-1875) showed an obvious musical gift at an early age, and received excellent training in both piano and composition. She married Aristide Farrenc, a flautist and music publisher, in 1821 and enjoyed a long and distinguished career as a pianist, composer, and pedagogue.

Most of Louise Farrenc's compositions are for solo piano; other works include three overtures, three symphonies, 4 piano trios, 2 sonatas for violin and piano, a cello sonata, a string quartet, 2 piano quintets (piano, violin, viola, cello, bass), a sextet, and a nonet. Most of her piano and chamber compositions were published by Aristide Farrenc, and many were simultaneously printed by other publishers in England and Germany. However, none of her orchestral music, including the *Première Ouverture*, was ever published. This piece was composed in August, 1834. It was performed at least once, in 1835. The manuscript of the full score is in the Bibliothèque Nationale in Paris.

## EDITORIAL NOTES

**Important:** in a few places, contradictory dynamic markings are shown. Those in parentheses are the editor's. The conductor should clarify which dynamic markings are desired. All tenuto and staccato markings are editorial.

Dr. Susan Pickett  
Catharine Chism Professor of Music  
Whitman College  
Walla Walla, WA 99362

March 1997



# Première Overture

violin 1

Louise Farrenc  
Susan Pickett, editor

Adagio (♩ = 60)

7

*ff* *sim.* *tr*

16

*p* *ff* *sf*

22

*sf* *sf* *sf* *calando*

25

*p* *sim.*

29

*sf* *p* *sim.*

33

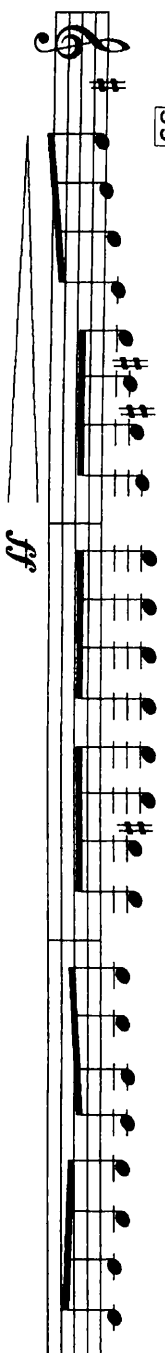
*sf* *p* *sim.*

36

*f*

39

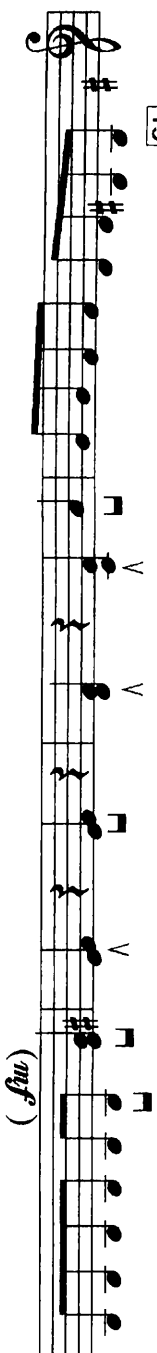
p. 2 violin I



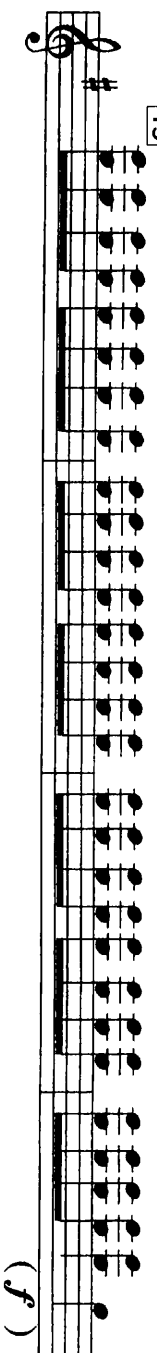
42



45



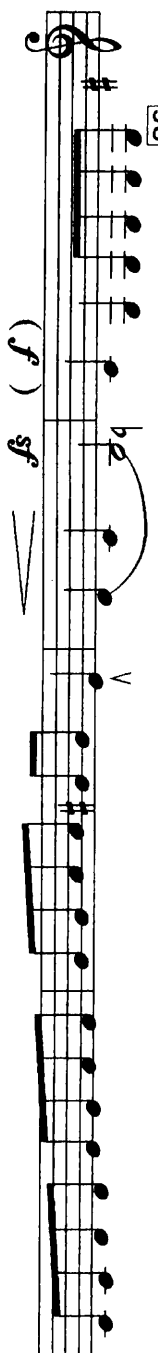
49



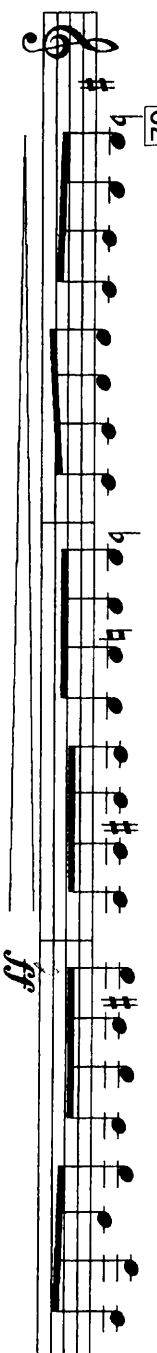
53



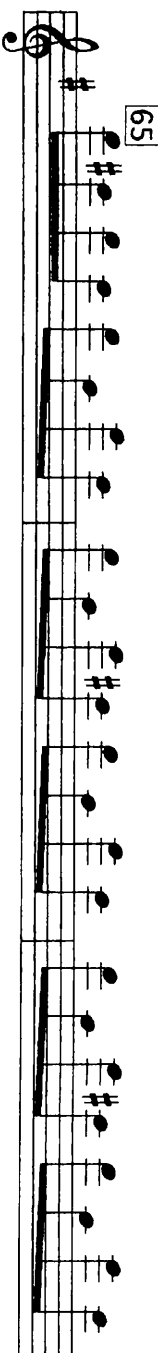
58



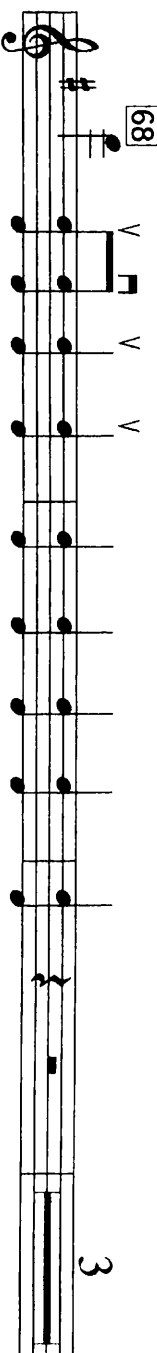
62



65



68



p. 3 violin I

74 *sim.* *V*

78 *pp* *V*

85 *V*

92 *V*

99 *a tempo*

103 *f (mf)*

107

111 *f (mf)*

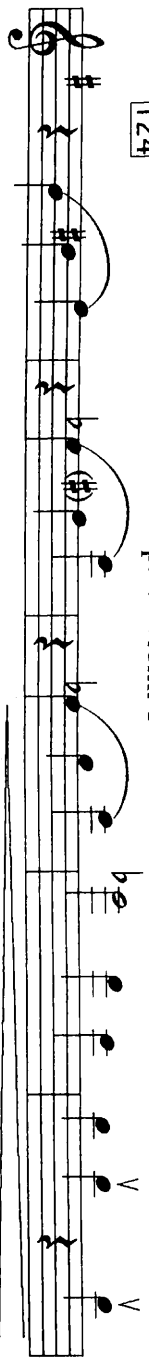
115

119 *p*

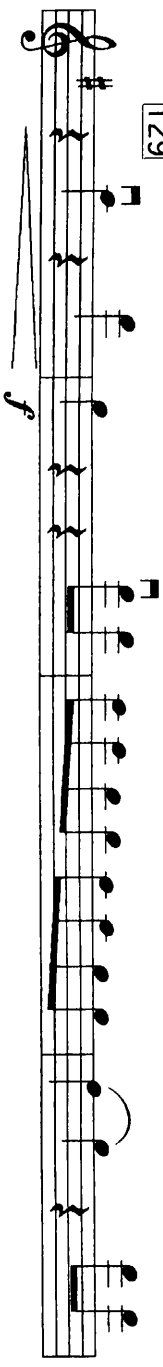
Detailed description of the musical score: The score is for Violin I, page 3. It begins at measure 74 with a *sim.* (sforzando) marking and a *V* (breve) symbol. Measure 78 is marked *pp* (pianissimo). Measure 85 has a *V* symbol. Measure 92 has a *V* symbol. Measure 99 is marked *a tempo*. Measure 103 is marked *f (mf)*. Measure 107 is marked *dim. e rit.* (diminuendo e ritardando). Measure 111 is marked *f (mf)*. Measure 115 is marked *p* (piano). Measure 119 is marked *p*. The score includes various musical notations such as slurs, ties, and dynamic markings.

124

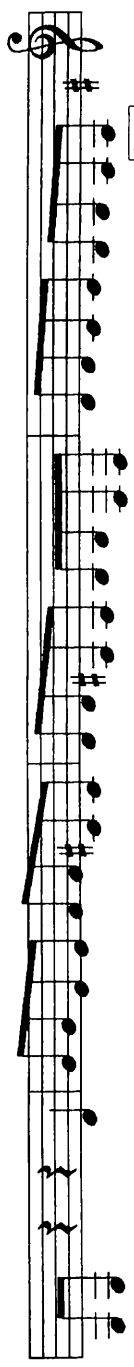
p. 4 violin I



129



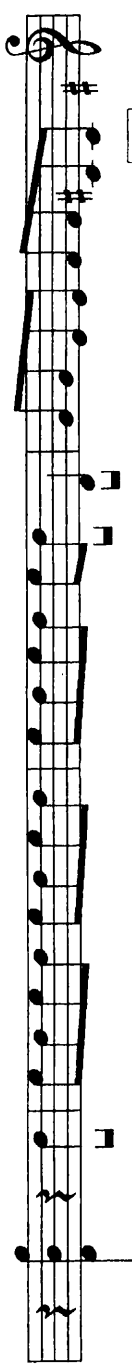
133



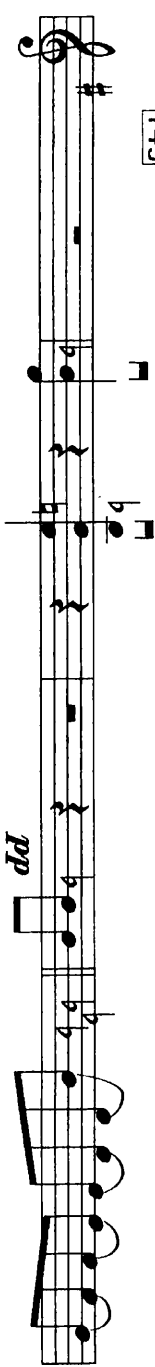
137



141



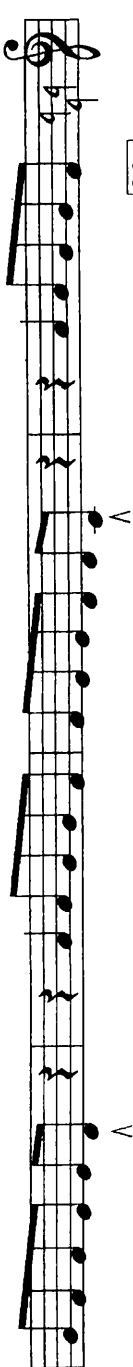
145



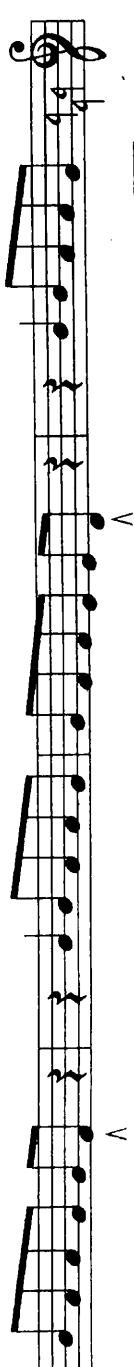
149

*sim.*

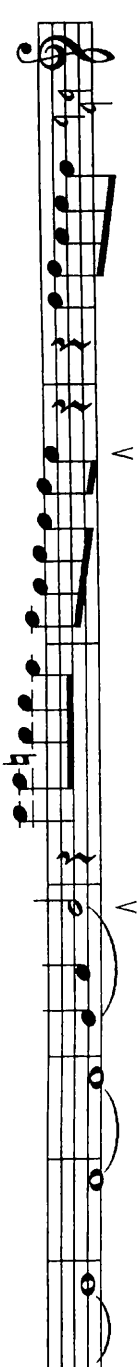
153



157

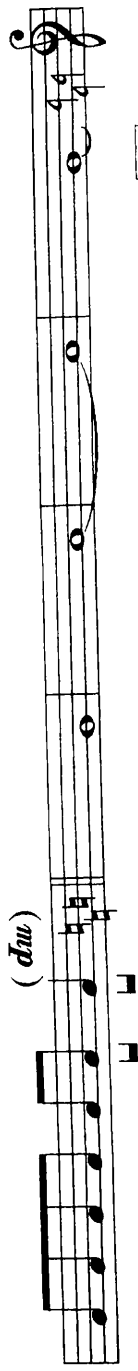


161



168

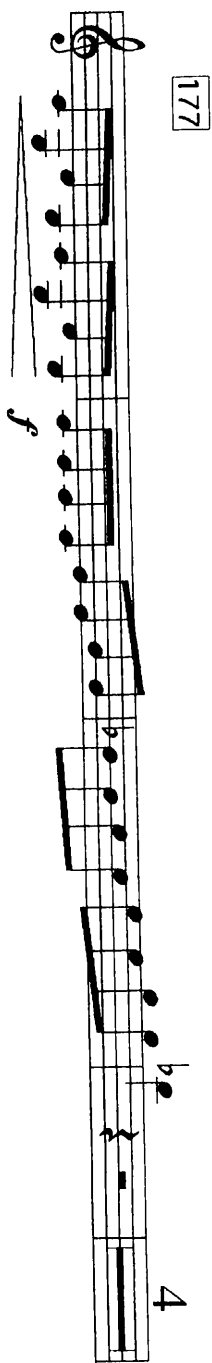
p. 5 violin 1



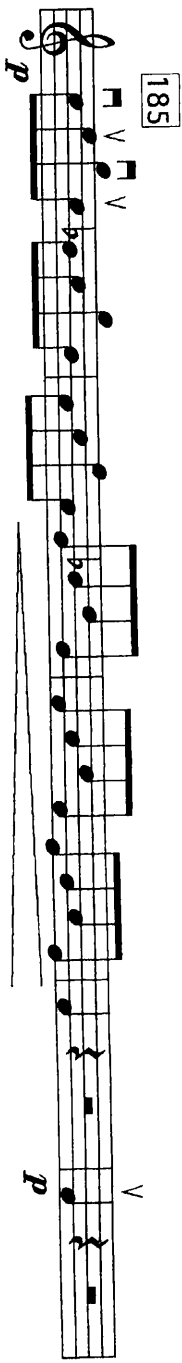
173



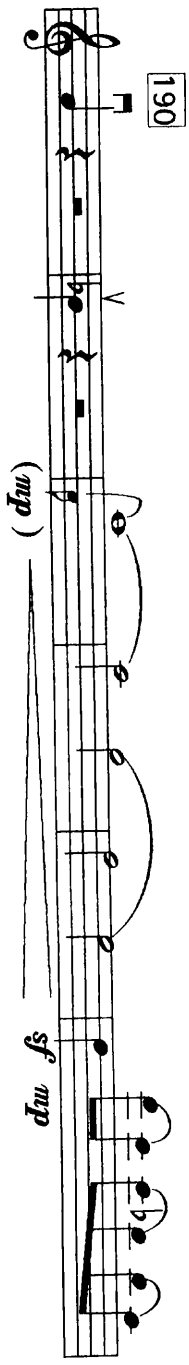
177



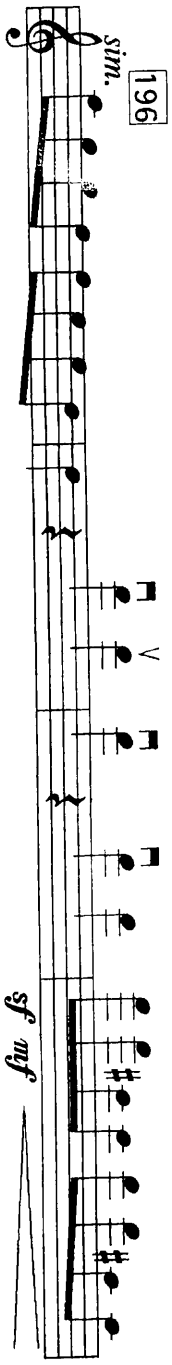
185



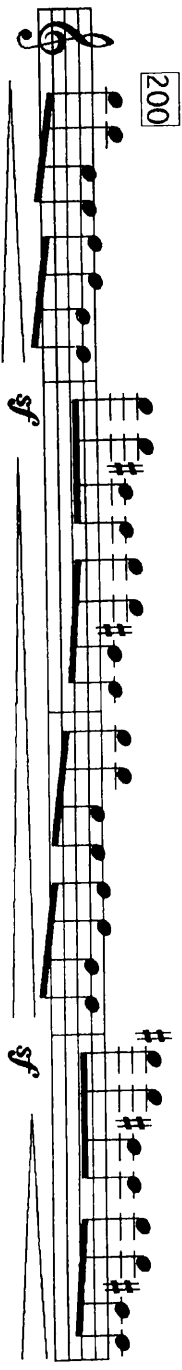
190



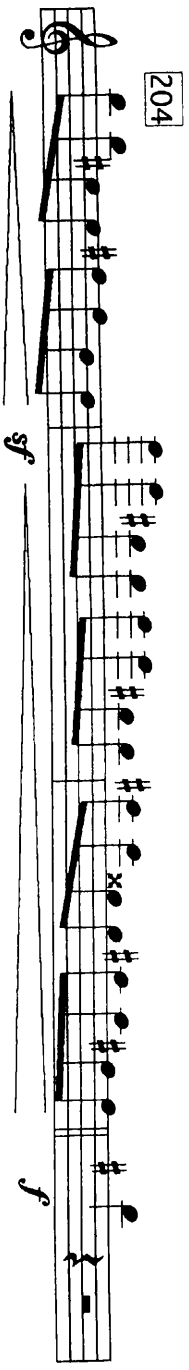
196



200



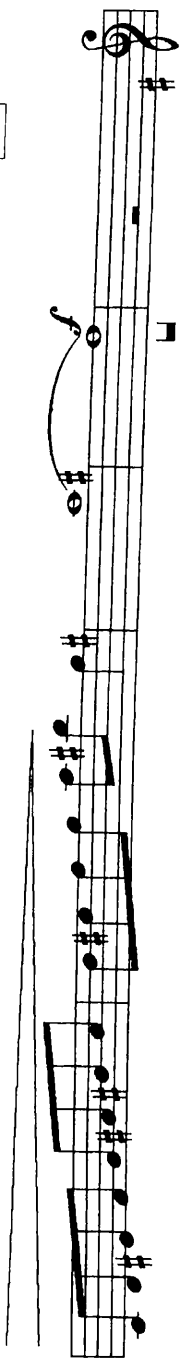
204



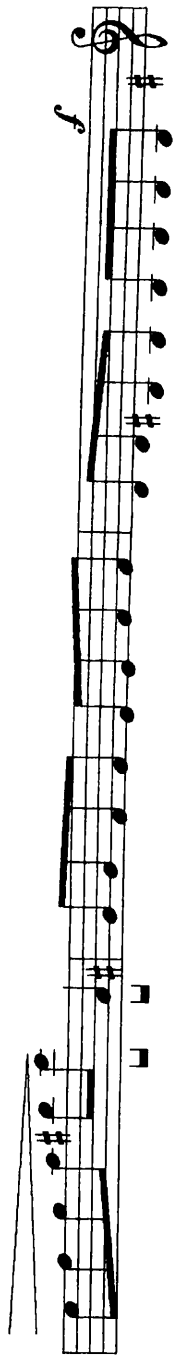


208

p. 6 violin 1



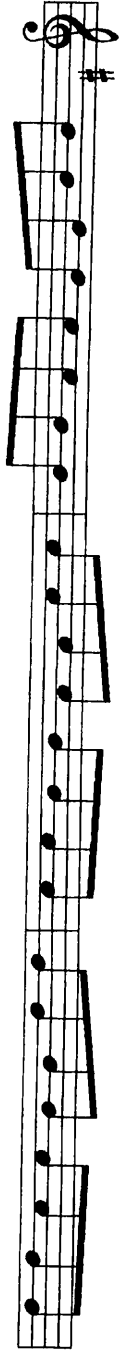
213



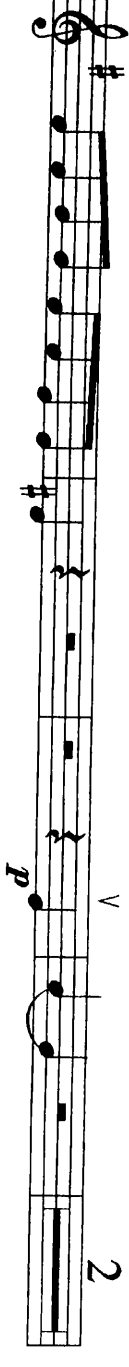
216



219



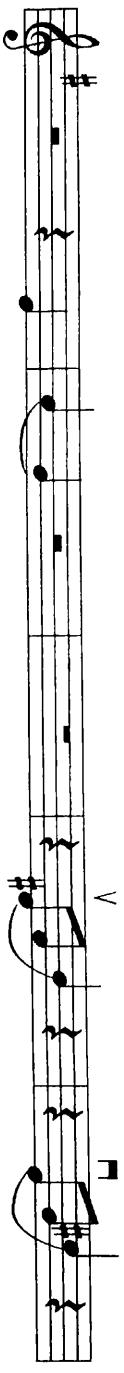
222



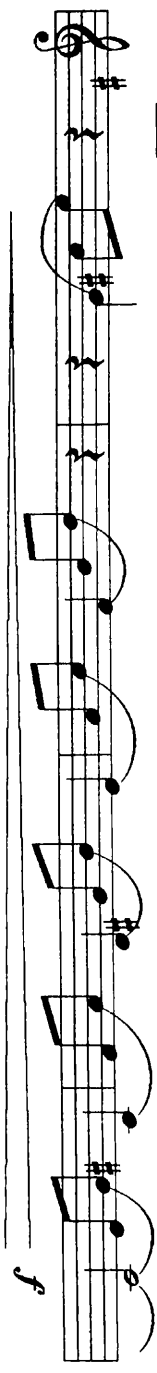
(this portion of the page is blank for page-turning ease)

228

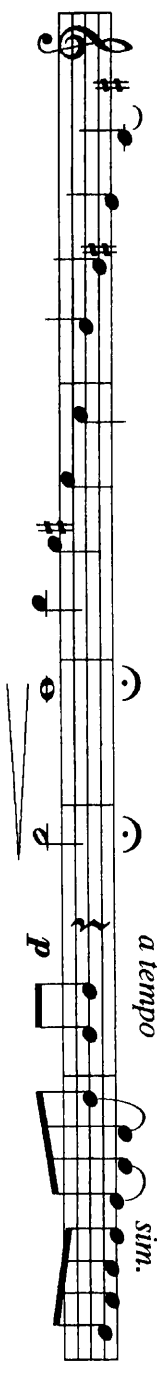
p. 7 violin I



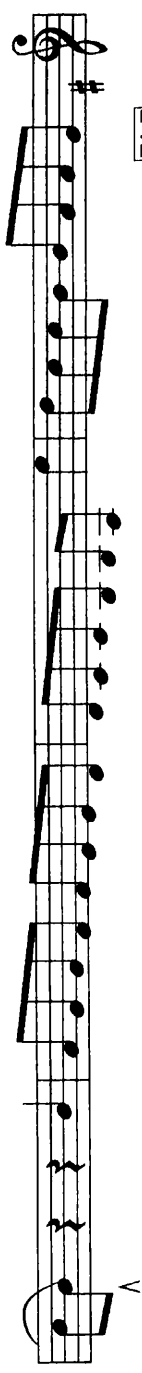
233



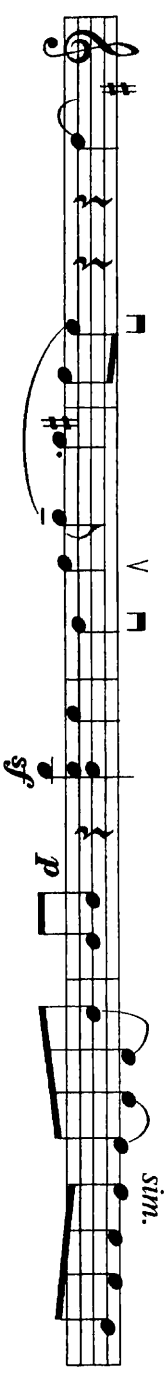
237



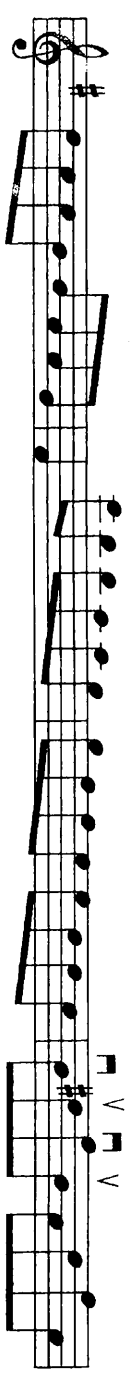
242



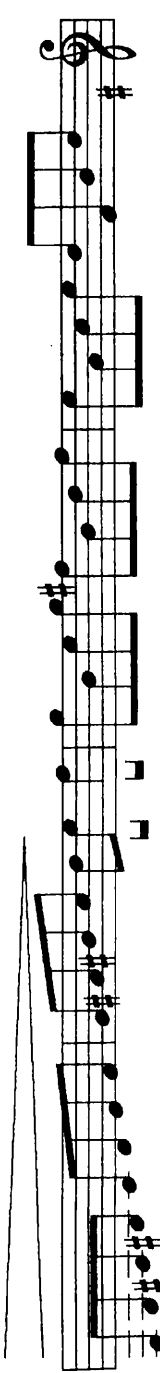
246



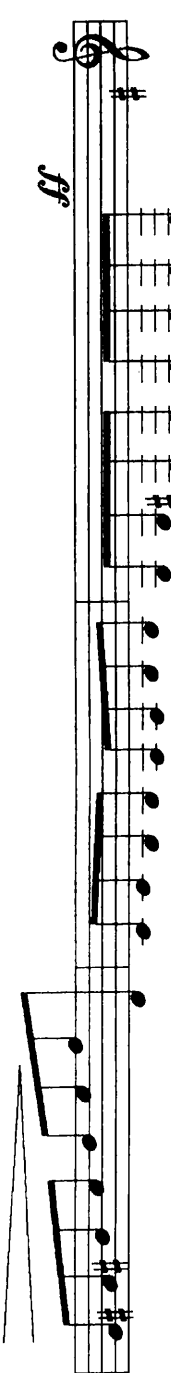
250



254



258

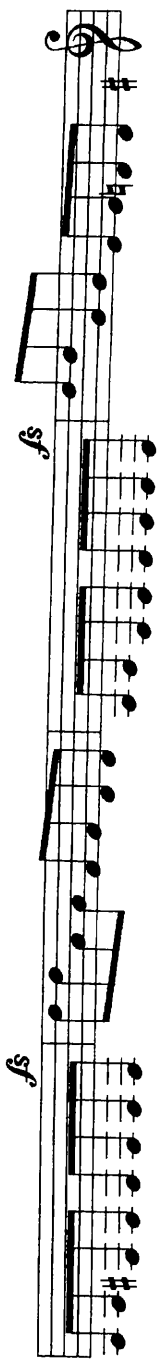


261



265

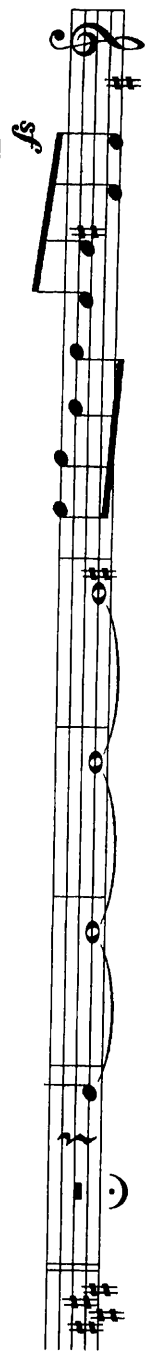
p. 8 violin 1



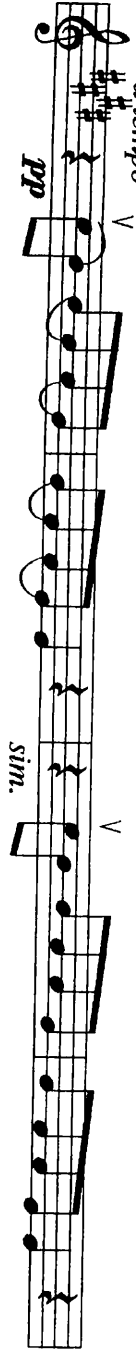
269



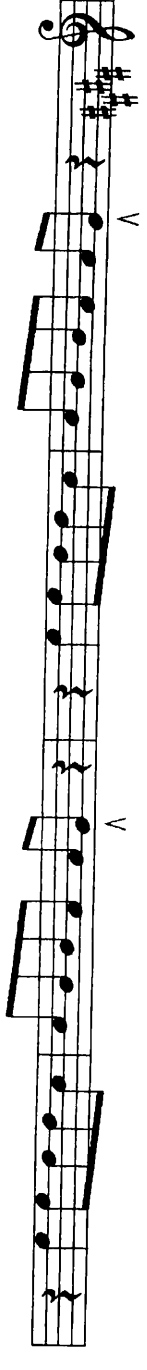
273



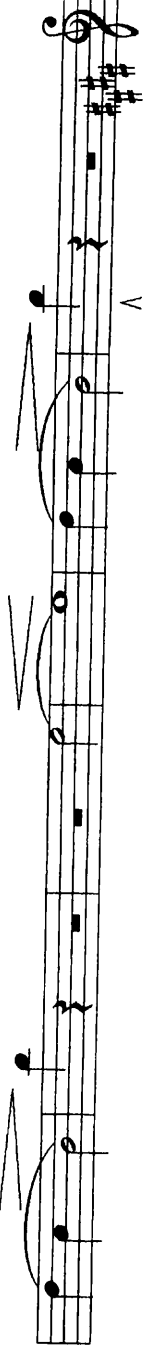
278

*a tempo*

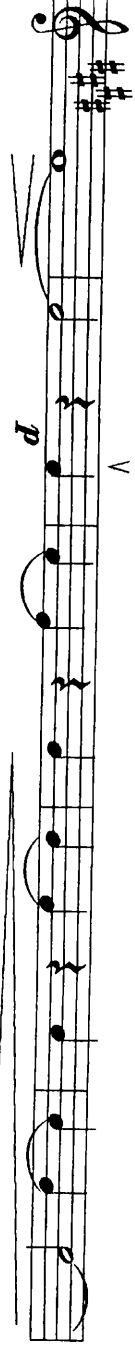
282



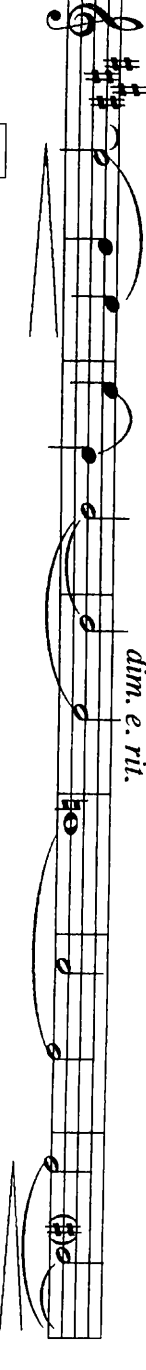
286



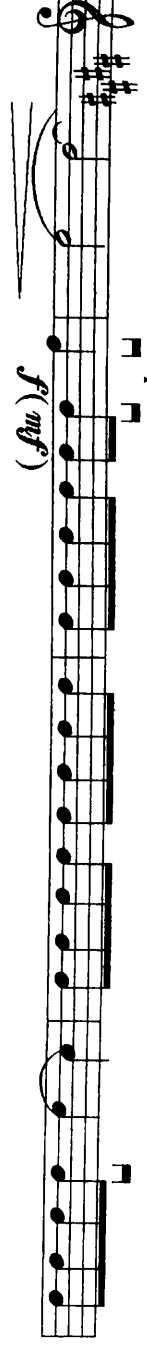
292



297

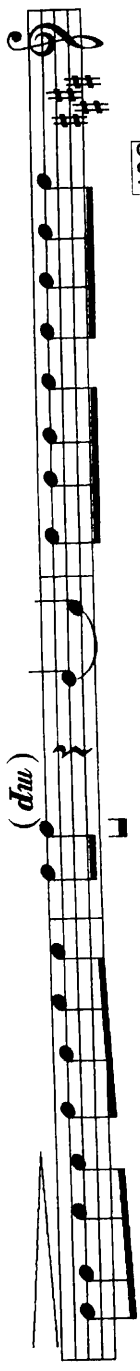
*dim. e. rit.*

303

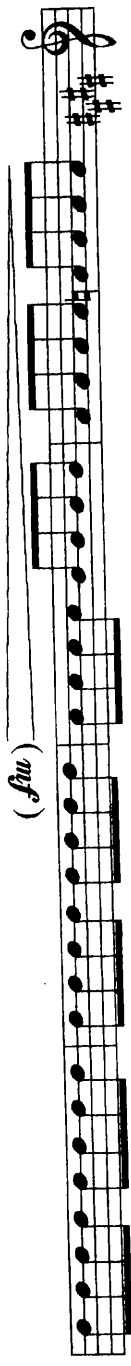
*a tempo*

p. 9 violin I

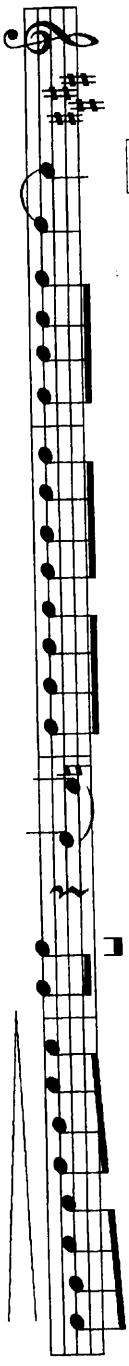
307



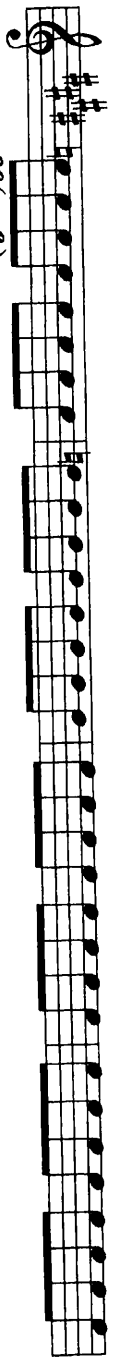
310



314



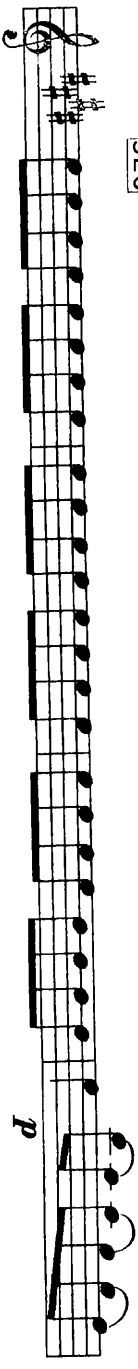
318



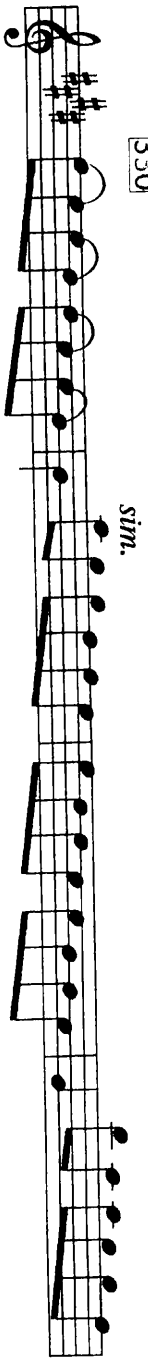
322



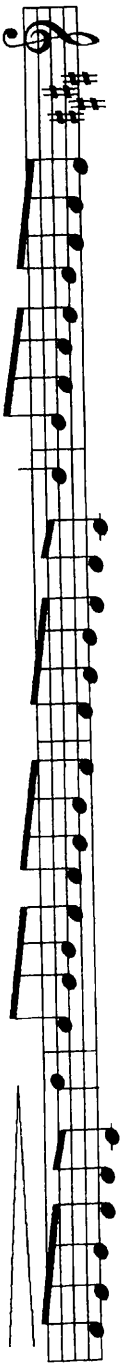
326



330



334



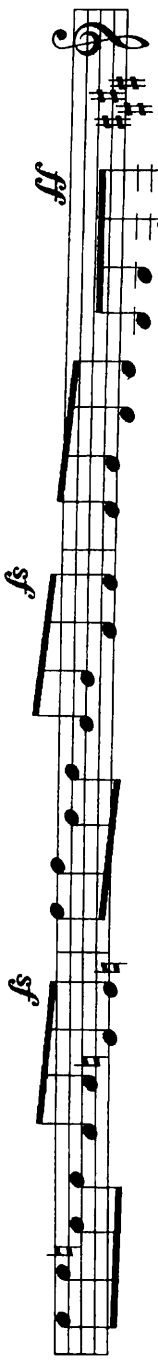
338



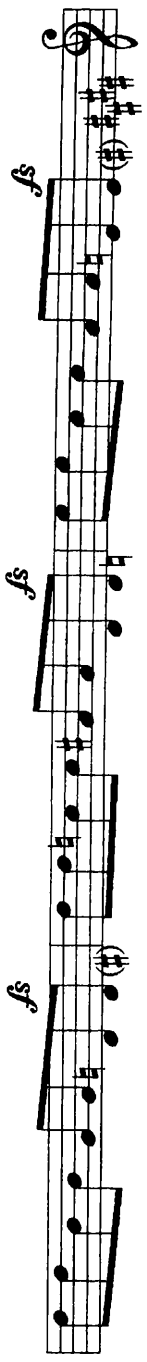
342

*(accel. al fine)*

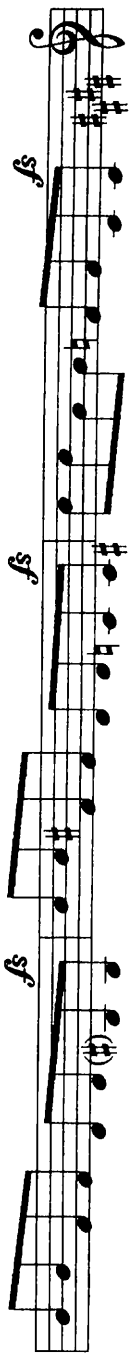
p. 10 violin I



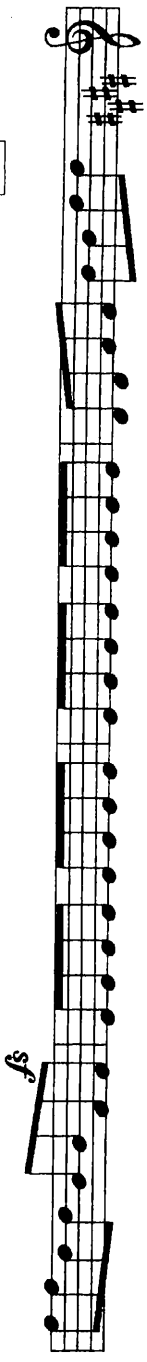
345



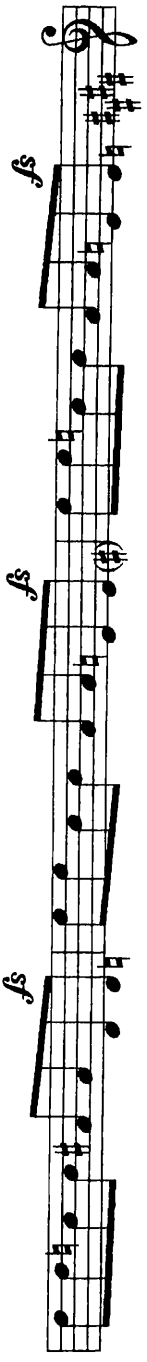
348



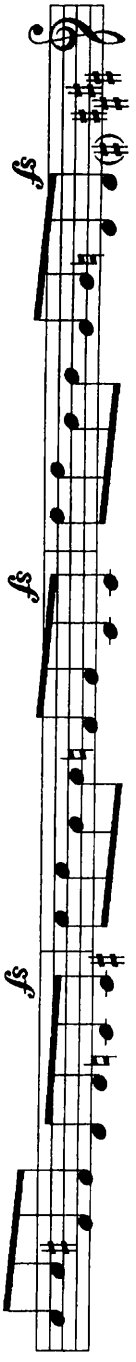
351



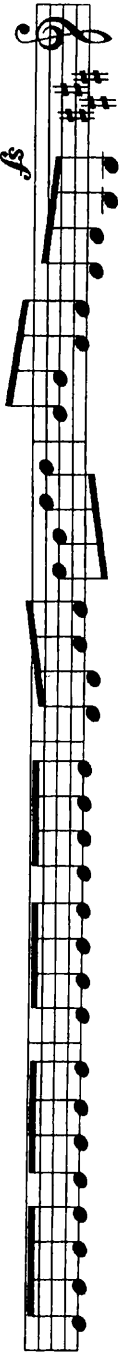
355



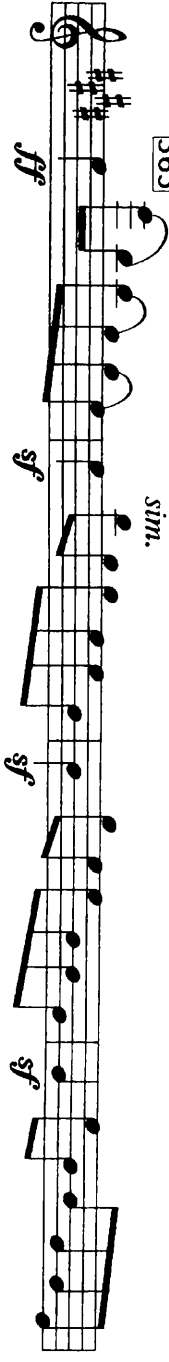
358



361



365



369

